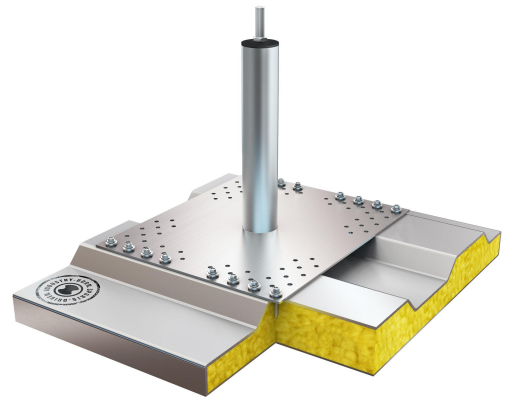


# DATASHEET

## SEKURANT® X50 TYP 15



### GENERAL

Art.Nr: SPA-X50-15-800

GTIN: 4030281025252

E-class number: 40-02-01-90

Customs tariff number: 73269098900002

Standards: CEN/TS 16415, EN 795-A:2012, UNI 11578:2015

Net weight: 4.46 kg

Gross weight: 4.46 kg

# DATASHEET

## SEKURANT® X50 TYP 15

The SEKURANT® X50, made of stainless steel and specially designed for trapezoidal steel sheet profiles and sandwich panels, is certified in accordance with EN 795: 2012 and CEN/TS 16145: 2013 and has a European Technical Approval (ETA) as well as a general building approval (abZ) from the German Institute for Building Technology (DIBt). It is used as an end or corner support for the substructure of cable systems. The pre-assembled, screwable support is supplied ready for installation with stainless steel sheet metal screws and self-adhesive EPDM sealing tape, making installation extremely time-saving. The lightweight, handy single stop point is available in heights of up to 1000 mm and is therefore suitable for insulation thicknesses of up to 800 mm. Innovative insulation elements minimize thermal bridges, which eliminates the formation of condensation and condensation water and therefore significantly increases energy efficiency.

- Single stop point, Ø50mm, especially for trapezoidal steel sheet profiles
  - Robust end or corner support for cable systems
  - Easy installation: ready-to-install delivery thanks to pre-assembled support
  - Highest energy efficiency: reduction of thermal bridges thanks to innovative insulation
- More information  
<[https://www.skylotec.com/eu\\_de/einzelanschlagnpunkt-sekurant-x20-x50/](https://www.skylotec.com/eu_de/einzelanschlagnpunkt-sekurant-x20-x50/)>

### FEATURES

Anchor point type:	Stationary anchor point
Type mounting base:	Trapezoidal sheet metal
Mounting type:	Sheet metal screws
Application areas:	Roofers, Flat roof construction
Colour:	Silver
Maximum number of persons:	3
Maximum temperature:	80 °C
Minimum temperature:	-20 °C
Rope access technique:	No

### DIMENSIONS

Diameter pillar:	50 mm
Diameter bore:	0 mm
Construction height:	800 mm
Foot plate length:	360 mm
Foot plate width:	300 mm
Hole spacing a:	15 mm
Hole spacing b:	32 mm
Minimum area required:	1080.00 cm²
Max height:	1000 mm

### MATERIAL

Material:	Stainless Steel
-----------	-----------------