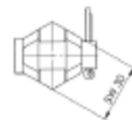
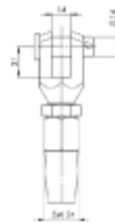
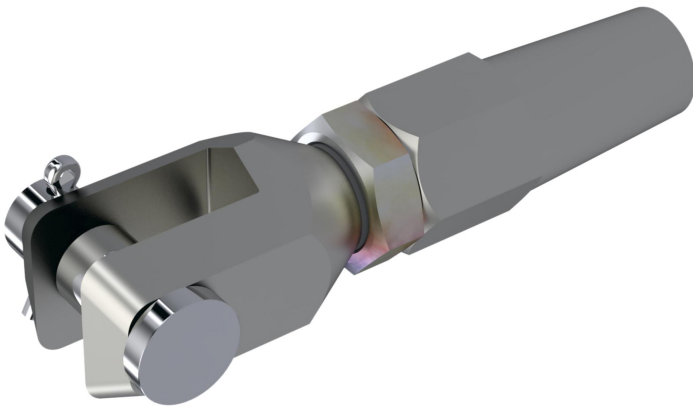


# DATASHEET

## SKYLINE 2.0 TERMINAL FORK HEAD



### GENERAL

Art.Nr:	SL-007-P	Standards:	RFU PPE-R/11.134 V1:2019
GTIN:	4030281202561	Net weight:	0.33 kg
E-class number:	40-02-01-90	Gross weight:	0.33 kg
Customs tariff number:	73269098		

## DATASHEET

# SKYLINE 2.0 TERMINAL FORK HEAD

The SKYLINE 2.0 SCREW TERMINAL FORK HEAD made of stainless steel is used for bolting to the steel cable. The fork head with the securing bolt is hooked into the compensator or anchor plate. The SKYLINE 2.0 horizontal rope belay system secures up to three people at the same time in fall-endangered areas over long distances.

### FEATURES

Thickness mounting base:	0 mm
Application areas:	Roofers, Flat roof construction
Colour:	Silver
Horizontal systems:	Horizontal rope system
Maximum area required:	0.00 cm <sup>2</sup>
Maximum number of persons:	3
Maximum load:	800.00 kg
Rope access technique:	No

### DIMENSIONS

Minimum area required:	0.00 cm <sup>2</sup>
Max height:	0 mm
Minimum height:	0 mm

### MATERIAL

Material:	Stainless Steel
-----------	-----------------