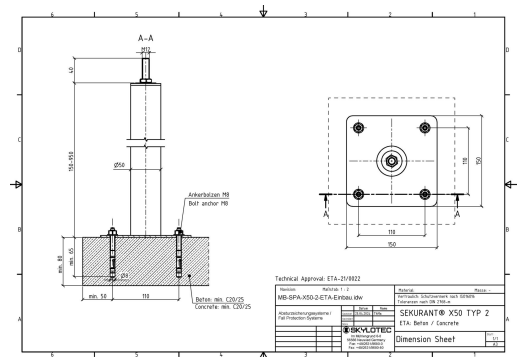
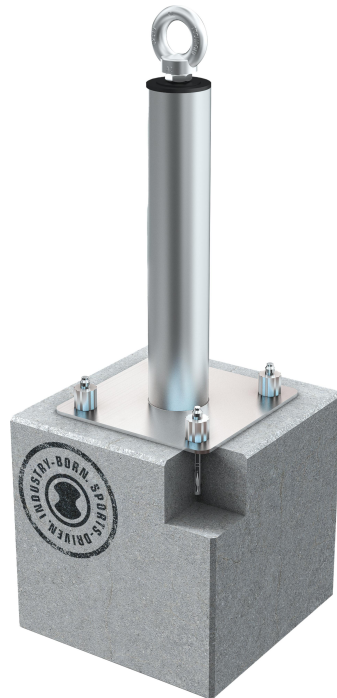


DATASHEET

SEKURANT® X50 TYP 2



GENERAL

Art.Nr:	SPA-X50-2-400	Standards:	CEN/TS 16415,EAD 331072-00-0601,EN 795-A:2012,UNI 11578:2015
GTIN:	4030281025641	Net weight:	1.57 kg
E-class number:	40-02-01-90	Gross weight:	1.57 kg
Customs tariff number:	73269098900002		

DATASHEET

SEKURANT® X50 TYP 2

Constructed of stainless steel specifically for concrete substrates, SEKURANT® X50 is certified to EN 795: 2012 and CEN/TS 16145: 2013. It serves as an end or corner support for the substructure of cable systems. The pre-assembled, bolt-on prop is supplied ready for installation with a heavy-duty anchor including shear nut, making installation extremely time-saving. The lightweight, handy single anchor point is available in heights up to 1000mm and is therefore suitable for insulation thicknesses up to 800mm. Innovative insulation elements minimize thermal bridges, which leads to the elimination of dew and condensation formation and thus to significantly increased energy efficiency.

- Single stop point, Ø50mm, especially for concrete substrates .
- Robust end or corner support for cable systems .
- Easy installation: ready-to-install delivery due to pre-assembled support .
- Highest energy efficiency: Reduction of thermal bridges through innovative insulation .

More Informations
<https://www.skylotec.com/eu_en/anchor-point-sekurant-x20-x50/>

FEATURES

Anchor point type:	Stationary anchor point
Type mounting base:	Concrete
Mounting type:	Fix anchor
Thickness mounting base:	100 mm
Application areas:	Roofers, Flat roof construction
Colour:	Silver
Maximum number of persons:	3
Minimum temperature:	-20 °C
Rope access technique:	No

DIMENSIONS

Diameter pillar:	50 mm
Diameter bore:	8 mm
Construction height:	400 mm
Foot plate length:	150 mm
Foot plate width:	150 mm
Hole spacing a:	110 mm
Hole spacing b:	110 mm
Minimum area required:	225.00 cm ²
Max height:	1000 mm
Minimum height:	200 mm

MATERIAL

Material:	Stainless Steel
-----------	-----------------

DATASHEET

SEKURANT® X50 TYP 2

